

Technical Bulletin TB - 0109

To : All Trailer Mounted 120 Machine Owners
From: Malcolm North
Date: 26/06/2014
Our Ref TB- 0109
Re: Cracked Cylinder

Affected: All Trailer Mounted 120's Produced since 1985 to Present

Mandatory Safety Check – 120M/H/T

It has been identified that over time lift cylinder 2 (fig.1) may suffer from material fatigue around the shaft pivot point (fig.3). Our findings point to a number of potential factors that may contribute to this fatigue such as vibration through road transport, lack of boom travel clamp and impact to the machine structure.

In light of this, it is recommended that in addition to the daily/weekly/monthly inspections an additional visual inspection of the cylinder must take place immediately. The cylinder can be visually inspected at rest on the upper surface, then again for the bottom surface by operating the cylinder in question to full height. During the inspection, if the paint surface has not cracked then no further action is required. Should the paint show signs of cracking then removal of the paint would be required for a closer inspection of the chrome shaft.

Any cylinder found to show signs of cracking must be replaced immediately and the machine load tested.



M. D. North

Engineering Manager.



Cylinder Location:

Fig 1.

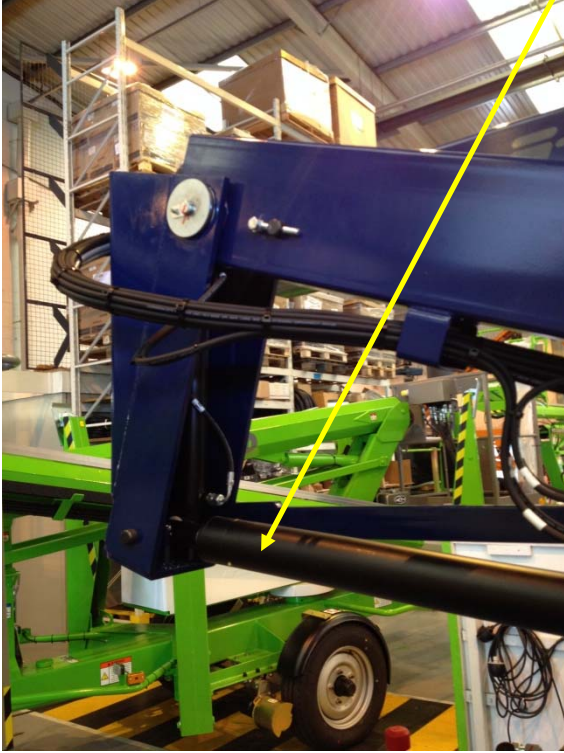


Fig 2

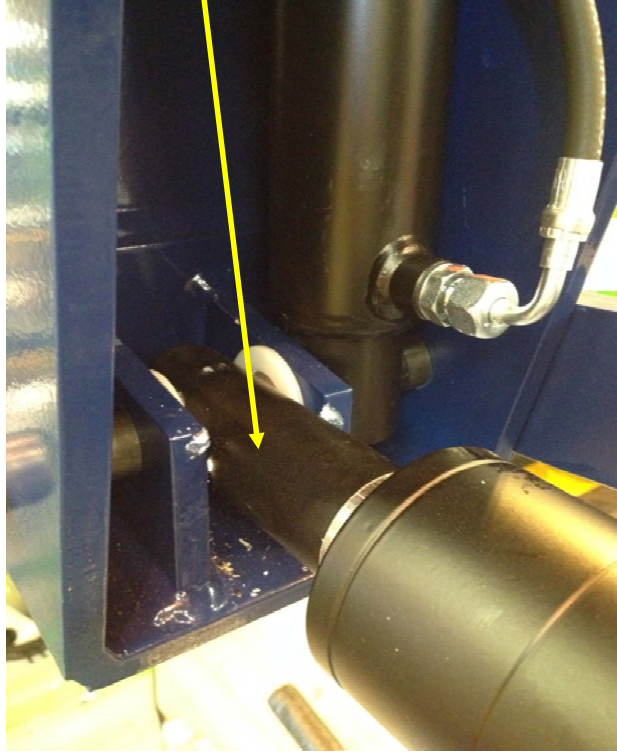


Fig 3. Example of cracking:





Niftylift Ltd | Fingle Drive, Stonebridge, Milton Keynes, MK13 0ER, England
T: +44 (0)1908 223456 | F: +44 (0)1908 312733 | W: www.niftylift.com
Parts Department | F: +44 (0)1908 227460

Technical Bulletin TB- 0109 has been actioned by: -

Name.....Signature.....Date.....

PLEASE RETURN THIS PAGE TO THE NIFTY SERVICE DEPT ON FAX NUMBER +44 (0) 1908 227460

Machine serial number.....

Machine serial number.....

Machine serial number.....

Machine serial number.....

Machine serial number.....

