

# nifty



## SP64

### SELF PROPELLED WORK PLATFORM



**62ft**

Platform height

**41ft**

Unrestricted outreach at 500lbs

**45% Gradeability**

4WD for rough terrain

**GVW Only 14,110lbs**

Lightest in its class

**Superb Maneuverability**

13ft outside turning radius

**Unique Suspension System**

Improving traction & comfort

**Swing-Out Engine Tray**

Quick & easy to service

**Platform Rotation  
& Jib-Boom**

Improved access to  
applications



**niftylift.com**

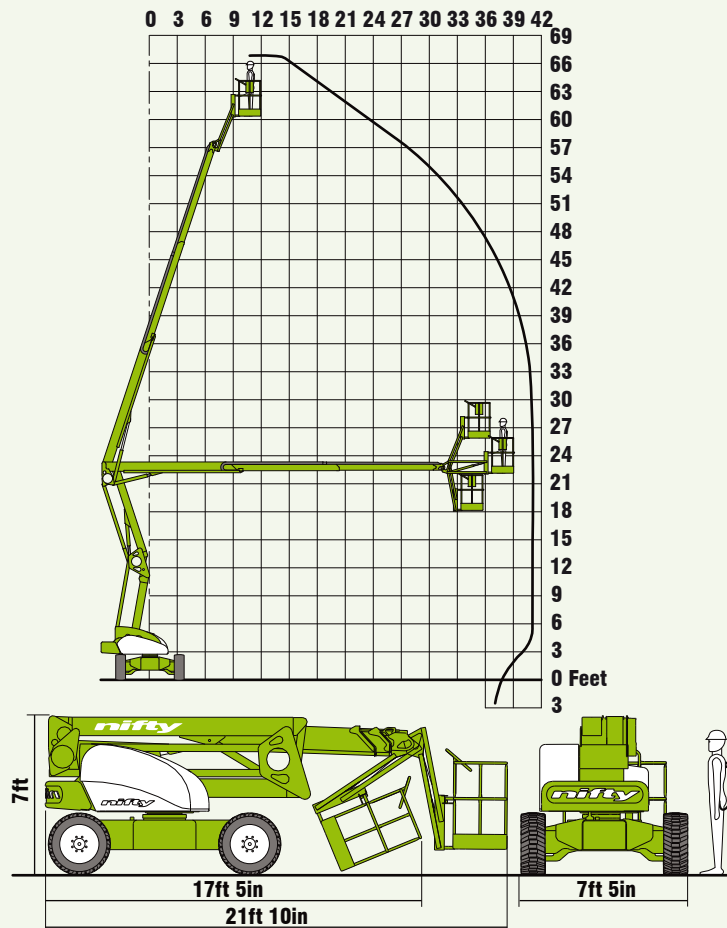


# nifty SP64

The Nifty **SP64** is available with 2 or 4-wheel-drive (2WD or 4WD). The **2WD** version offers Nifty's versatile Bi-Energy option combining battery with Diesel power for ultimate flexibility and maximized utilization. The **4WD** version delivers superb traction through its unique suspension and powerful motors. Both combine innovative weight and space saving design with an excellent turning circle for better maneuverability on-site and lower transportation costs. Proportional controls deliver smooth, measured operation while platform rotation and jib boom allow precise positioning anywhere in its vast working envelope.

## SAFETY FEATURES

- Automatic Fail-Safe Brakes
- Tilt Alarm
- Foam Filled Tires
- Manual Recovery with Hand Pump
- Dual Controls (Platform & Base)
- Lock Valves on all Hydraulic Cylinders
- Dual Harness Points
- Meets OSHA and ANSI Regulations



Due to a policy of continuing development and improvement, Niftylift reserves the right to change any specification without notice. Please confirm exact specification before ordering.



The **SP64** offers exceptional outreach, whether it's up and over access to awkward locations or outreach to jobs below ground level. The **SP64** does it all still leaving plenty of space in the platform for tools and equipment.

## SPECIFICATION

<b>Working Height</b>	68ft 6in
<b>Platform Height</b>	62ft
<b>Working Outreach</b>	41ft
<b>Slew</b>	360°
<b>Flyboom Arc</b>	150°
<b>Width</b>	7ft 5in
<b>Height</b>	7ft
<b>Length - Stowed</b>	17ft 5in
<b>- Overall</b>	21ft 10in
<b>Minimum Weight* - (2x4)</b>	14,110lbs*
<b>- (4x4)</b>	14,110lbs*
<b>Turning Radius - Outside</b>	13ft
<b>Platform Rotation</b>	100°
<b>Platform Capacity</b>	500lbs
<b>Platform Size</b>	5ft 11in x 2ft 4in
<b>Drive Speed - (2x4)</b>	2.8mph
<b>- (4x4)</b>	4.1mph
<b>Gradeability</b>	30% (2x4) - 45% (4x4)
<b>Power System - (2x4)</b>	Battery Only
<b>- (4x4)</b>	Bi-Energy (Battery & Diesel) Kubota 722 (18Hp) Diesel Only Kubota 1505 (32Hp)

\* Weights may vary according to specification, please confirm before ordering.

### Supplied by:

### NIFTYLIFT INC

32 Concourse Way,  
Greer, SC 29650 USA  
Sales: 1-800-NIFTYLIFT (800-643-8954)  
Office: 1-877-MYNIFTY (877-696-4389)  
Fax: 1-864-968-8836  
e.mail: info@niftylift.com  
www.niftylift.com

### NIFTYLIFT LTD

Fingle Drive, Stonebridge  
Milton Keynes, MK13 0ER  
England, United Kingdom  
Tel.: +44 (0)1908 223456  
Fax.: +44 (0)1908 312733  
e.mail: info@niftylift.com  
www.niftylift.com