

# nifty



niftylift.com

# SP53 4x4

## SELF PROPELLED WORK PLATFORM



**52ft 6in**

Platform height

**32ft 6in**

Unrestricted working outreach  
with 661kg SWL

**50% Gradeability**

4WD for rough terrain

**GVW Only 13,900lbs**

Construction site friendly

**5.5kVA Generator  
Available**

Self-contained 110V supply

**Swing-Out Engine Tray**

Quick & easy to service

**Extra-Large Platform**

More room to work and carry  
tools & equipment



**180° Platform Rotation,  
& Jib-Boom**

Maximizing accuracy when  
positioning platform

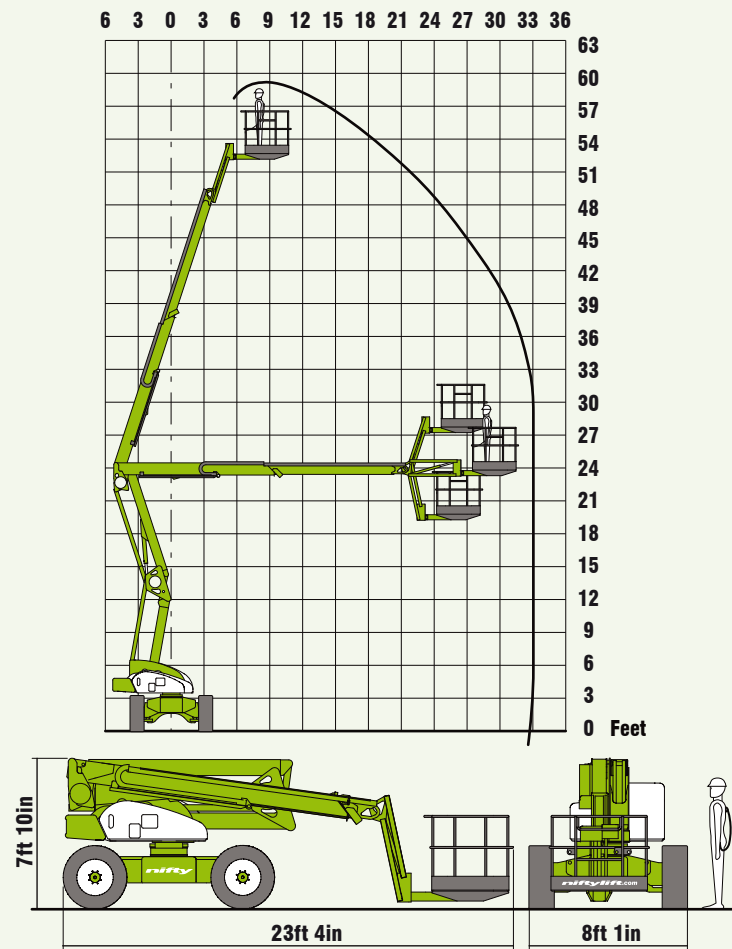


# nifty SP53

The Nifty **SP53 4x4** is a heavy duty 4-wheel-drive (4WD) work platform developed specifically for applications within the construction industry. With its extra-large platform size (5ft 11in x 2ft 4in) and increased safe working load (661lbs) the **SP53** can safely accommodate three operators, or provide extra space for two to work, leaving plenty of spare capacity for tools and equipment. The **SP53's** robust chassis design coupled with it's powerful 4WD provide strength, stability and superb traction over steep or uneven surfaces, giving its operator the confidence to tackle even the toughest jobs.

## SAFETY FEATURES

- Automatic Failsafe Brakes
- Tilt Alarm
- Foam Filled Tires
- Emergency Descent System
- Dual Controls (Platform & Base)
- Lock Valves on all Hydraulic Cylinders
- Triple Harness Points
- Meets OSHA and ANSI Regulations



Due to a policy of continuing development and improvement, Niftylift reserves the right to change any specification without notice. Please confirm exact specification before ordering.



The **SP53** offers exceptional rough terrain performance due to its increased wheel size and ground clearance. Add to this a class leading working envelope and spacious 661lbs capacity platform and the **SP53** stands out as one of the most robust and versatile work platforms available.

## SPECIFICATION

<b>Working Height</b>	59ft
<b>Platform Height</b>	52ft 6in
<b>Working Outreach</b>	32ft 6in
<b>Slew</b>	360°
<b>Flyboom Arc</b>	130°
<b>Width</b>	8ft 1in
<b>Height</b>	7ft 10in
<b>Length</b>	23ft 4in
<b>Minimum Weight</b>	13,900lbs*
<b>Turning Radius - Outside</b>	19ft 8in
<b>Platform Rotation</b>	180°
<b>Platform Capacity</b>	661lbs
<b>Platform Size</b>	4ft 11in x 3ft 11in
<b>Drive Speed</b>	4.1mph
<b>Gradeability</b>	50%
<b>Control System</b>	Fully proportional hydraulic
<b>Power System</b>	Kubota 1505 32Hp

\* Weights may vary according to specification, please confirm before ordering.

### Supplied by:

### NIFTYLIFT INC

32 Concourse Way,  
Greer, SC 29650 USA  
Sales: 1-800-NIFTYLIFT (800-643-8954)  
Office: 1-877-MYNIFTY (877-696-4389)  
Fax: 1-864-968-8836  
e.mail: info@niftylift.com  
www.niftylift.

### NIFTYLIFT LTD

Fingle Drive, Stonebridge  
Milton Keynes, MK13 0ER  
England, United Kingdom  
Tel.: +44 (0)1908 223456  
Fax.: +44 (0)1908 312733  
e.mail: info@niftylift.com  
www.niftylift.com